



PING PONG

Southbank

NEW YEAR'S EVE

2024



Welcome the new year in style with

Access to fireworks viewing area • Photobooth • Glass of bubbly at midnight • Bar & DJ set till 2am

## Turquoise

TICKET

170 per person

**SOLD OUT**

Package includes:  
Glass of bubbly on arrival  
A Festive Dim Sum Set Menu  
Fireworks  
Glass of bubbly at midnight

## Kids

TICKET

150 per person

Package includes:

1 Kids set menu  
unlimited soft drinks\*  
NYE kids surprise

## Silver

TICKET

210 per person

Package includes:

Glass of bubbly on arrival  
A Festive Dim Sum Set Menu  
1 Mocktail or 1 Iced Tea or 1 Water btl per person  
3 Cocktails or 1 Wine btl per person  
Choose between: Cocktails: Lychee & Roses,  
Strawberry & Passion Sunrise, Lemongrass & Lime  
Wine bottle: Pinot Grigio (vg), Pinot Noir (vg)  
& Cava (vg)  
Fireworks

Glass of bubbly at Midnight  
Access to VIP lounge after midnight  
with complimentary canapés until 2am

## Gold

TICKET

280 per person

Package includes:

Glass of bubbly on arrival  
A Festive Dim Sum Set Menu  
1 Mocktail or 1 Iced Tea or 1 Water btl per person  
Open Bar until midnight  
Open Bar Drinks include: Cocktails: Lychee & Roses,  
Strawberry & Passion Sunrise, Lemongrass & Lime  
50ml house spirits & mixers  
Wine: Pinot Grigio (vg), Pinot Noir (vg),  
Pinot Grigio Rosato (vg) & Cava (vg)

Fireworks  
Glass of bubbly at Midnight  
Access to VIP lounge after midnight  
with complimentary canapés until 2am

### THE DIM SUM-SIZED PRINT:

All guests aged 18 and over must select the same ticket package, except children under 18, who may opt for the £150 Kids package. ID checks will be required.

\*Unlimited soft drinks for kids include mocktails and iced teas.

Access to the outdoor area for viewing the fireworks is not guaranteed and may be restricted due to adverse weather, as directed by the Greater London Authority. Ping Pong management and staff have no control over this. The only entry time to our restaurant is 7 PM. Please plan your journey with enough time to account for potential queues. If you do not pass through the security gate by 8:30 PM, Southbank Centre security will deny entry, and we will be unable to assist. Tickets are non-refundable. Once purchased, no refunds will be issued under any circumstances.



# New Year's Feast



All dim sum set menus serve one, items are served as individual pieces unless stated

## ORIGINAL

### NIBBLES

prawn crackers (portion) **gf**

### CRISPY

2 wagyu beef crispy rice cakes **al**

crispy duck spring roll

vegetable spring roll **vg**

prawn toast

### STEAMED

2 har gau **gf**

2 chicken truffle gyoza **H**

spicy vegetable dumpling **vg, gf, al** 🌶️

butternut squash & goji berry dumpling **vg, gf**

vegetable sticky rice **vg, gf**

### DESSERT

matcha & yuzu bavaois cake

## VEGAN

### NIBBLES

edamame with celery sea salt (portion) **vg, gf**

seaweed salad (portion) **vg, gf**

### CRISPY

3 vegetable spring rolls **vg**

sichuan crispy aubergine (portion) **vg**

### STEAMED

2 mushroom & leek dumplings **vg, gf**

2 spinach & mushroom gyoza **vg**

2 butternut squash & goji berry dumplings **vg, gf**

vegetable sticky rice **vg, gf**

### DESSERT

2 seasonal mochis **vg, gf**

## WITHOUT GLUTEN

### NIBBLES

prawn crackers (portion) **gf**

### CRISPY

2 satay prawn in gentle marinade **gf**

soy marinated chicken skewers (portion) **gf** **H**

### STEAMED

2 har gau **gf**

2 butternut squash & goji berry dumplings **vg, gf**

2 spicy vegetable dumplings **vg, gf, al** 🌶️

vegetable sticky rice **vg, gf**

### DESSERT

2 earl grey macarons **v, gf**

Please note that set menu items may be subject to change based on availability. We will notify all customers of any menu updates in November.

**v** = suitable for vegetarians

🌶️ = quite spicy

**vg** = suitable for vegans

🌶️🌶️ = very spicy

**gf** = gluten friendly

**H** = made with halal meat

#### ALLERGIES & INTOLERANCES

Although we separate ingredients and clean down all work areas and equipment, the presence of allergenic ingredients in our kitchens means we cannot guarantee any of our dishes are free of those allergens. If you have a severe allergy we would advise our menu may not be suitable for you. If you have any questions at all, please speak to a member of our team. If you have a food allergy or intolerance please let us know before you order. We take allergies very seriously and we work hard to provide a wide choice to fit a range of dietary needs. Our Allergen Matrix, listing specific allergens present in each dish is available from our team on request. Please note: all our dishes and drinks may contain traces of nuts, nut oils or egg. Please be aware: shrimp is a common ingredient used in many forms of Asian cooking.



# Kids Set Menu



All dim sum set menus serve one, items are served as individual pieces unless stated



## ORIGINAL

### NIBBLES

prawn crackers (portion) *gf*

### CRISPY

2 crispy duck spring rolls

vegetable spring roll *vg*

2 soy marinated chicken skewers *gf* 

### STEAMED

2 har gau *gf*

char siu pork bun *al*

### RICE

little pandas crispy chicken rice bowl  
(portion)

### DESSERT

earl grey macaron *v, gf*

yuzu macaron *gf*

vanilla ice cream (2 scoops) *v, gf*

## VEGETARIAN

### NIBBLES

edamame with celery sea salt (portion) *vg, gf*

### CRISPY

3 vegetable spring rolls *vg*

2 crispy tofu gyoza *vg*

### STEAMED

2 spinach & mushroom gyoza *vg*

vegetable bun *vg, al*

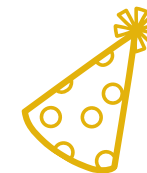
### RICE

little pandas crispy tofu rice bowl *vg*  
(portion)

### DESSERT



2 earl grey macaron *v, gf*

vanilla ice cream (2 scoops) *v, gf*



Please note that set menu items may be subject to change based on availability. We will notify all customers of any menu updates in November.

*v* = suitable for vegetarians  
*vg* = suitable for vegans  
*gf* = gluten friendly  
 = made with halal meat

 = quite spicy  
 = very spicy

#### ALLERGIES & INTOLERANCES

Although we separate ingredients and clean down all work areas and equipment, the presence of allergenic ingredients in our kitchens means we cannot guarantee any of our dishes are free of those allergens. If you have a severe allergy we would advise our menu may not be suitable for you. If you have any questions at all, please speak to a member of our team. If you have a food allergy or intolerance please let us know before you order. We take allergies very seriously and we work hard to provide a wide choice to fit a range of dietary needs. Our Allergen Matrix, listing specific allergens present in each dish is available from our team on request. Please note: all our dishes and drinks may contain traces of nuts, nut oils or egg. Please be aware: shrimp is a common ingredient used in many forms of Asian cooking.